

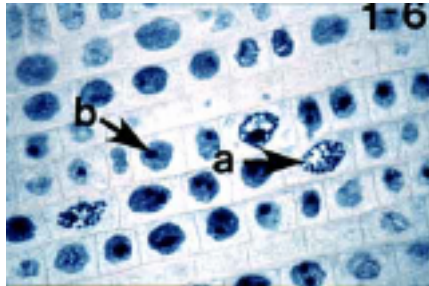
Benchmark #2 Review

1 The type of cell shown is a



- A Animal cell.
- B Plant Cell.
- C Bacteria cell.
- D

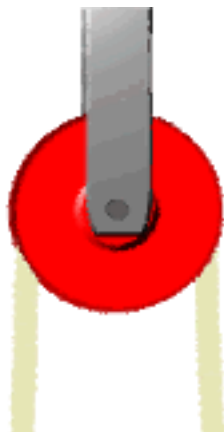
2 The dividing cells pictured here are most likely _____ cells because of their box like shape.



- A Animal
- B Plant
- C Bacteria
- D

Benchmark #2 Review

3 What type of simple machine is represented by the image?



- A Wheel and axle
- B pulley
- C wedge
- D lever

4 What is most likely to happen if a cell is placed in a high salt (NaCl) solution?

- A The cell will shrink in size as it loses water.
- B The cell will grow in size as it gains water.
- C The cell will keep its normal size as water moves in and out equally.
- D The cell will keep its normal size as salt moves in and out equally.

5 During the process of diffusion

- A a cell surrounds and absorbs large particles.
- B particles move from areas of lower concentration to higher concentration.
- C a cell surrounds and gets rid of large particles
- D particles move from areas of higher concentration to lower concentration

Benchmark #2 Review

6 Which number is pointing at the control center of the cell (The Nucleus)?



- A 2
- B 5
- C 3
- D 7

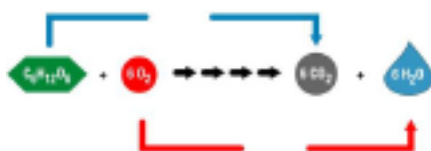
7 Osmosis is important to cells because

- A cells are filled with fluids that are made mostly of water.
- B cells need to move from place to place.
- C cells need to get rid of large particles they don't need
- D cells are mostly dry.

8 When water passes into or out of a cell, it is called

- A exocytosis
- B endocytosis
- C osmosis
- D diffusion

9 The equation below occurs in what organelle?

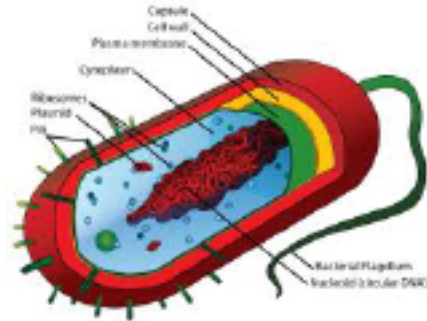


- A mitochondria
- B chloroplast
- C nucleus
- D lysosome

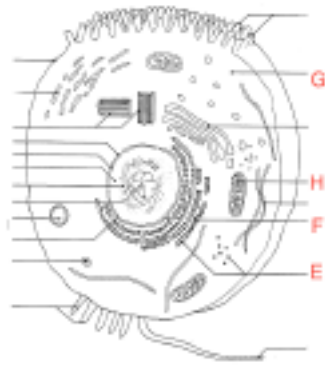
10 Which of the following cells is Prokaryotic?

Benchmark #2 Review

A



B



C



Benchmark #2 Review

D

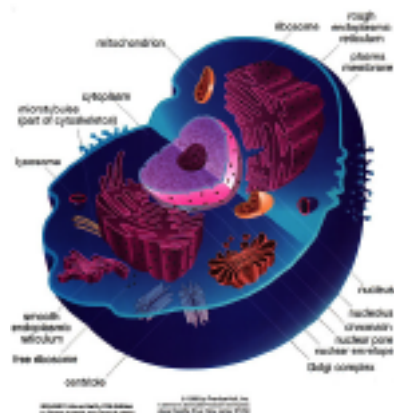


11 The equation shown here is _____.



- A fermentation
- B photosynthesis
- C cellular respiration
- D osmosis

12 This picture is showing what type of cell?



- A Plant

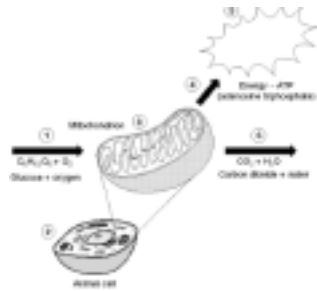
Benchmark #2 Review

- B Animal
- C Bacteria
- D

13 The process that moves water across a semipermeable membrane from high to low concentrations is called

- A osmosis.
- B active transport.
- C diffusion.
- D facilitated diffusion.

14 The process represented here is _____.



- A photosynthesis
- B fermentation
- C cellular respiration
- D diffusion

15 True or False: All eukaryotic organisms perform cellular respiration, but not all organisms perform photosynthesis.

- A True
- B False
- C
- D

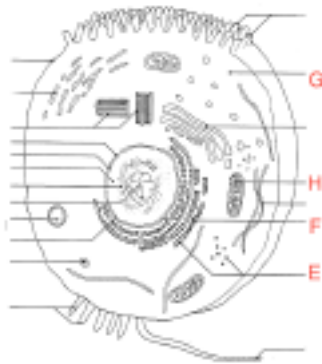
Benchmark #2 Review

16 What two simple machines is this person using to move the load of dirt?



- A screw: lever
- B lever: wedge
- C wheel and axle: pulley
- D lever : wheel and axle

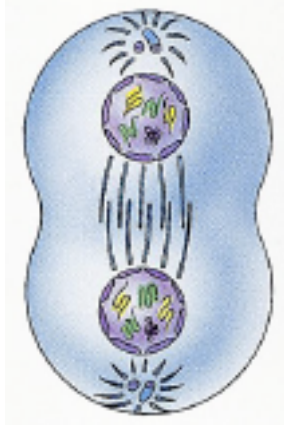
17 The organelle labelled H in the picture is the



- A Nucleus.
- B Ribosome.
- C Golgi Body.
- D Mitochondria

Benchmark #2 Review

18 The phase of cell division shown to the right is know as



- A Prophase
- B Metaphase
- C Anaphase
- D Telophase

19 Mitosis begins in which cell organelle?

- A the endoplasmic reticulum
- B the mitochondria
- C the cytoplasm
- D the nucleus

20 How is mitosis in plant cells different from mitosis in animal cells?

- A Plants cells form cell plates for their cell wall.
- B Plant cells don't undergo mitosis.
- C Plant cell mitosis is slower.
- D Plant cell mitosis is much faster.

21 What are the stages of mitosis?

- A Anapest, protophase, multiphase, and telephase
- B Prophase, metaphase, anaphase, and telophase
- C Adenine, guanine, thymine, and cytosine
- D Phase1, Phase2, Phase3, Phase4

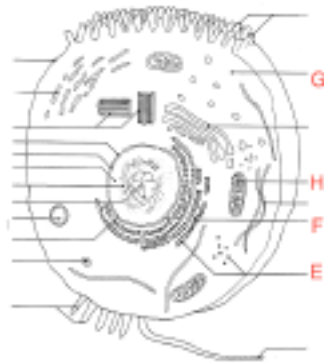
22 What happens during the VERY END of mitosis?

- A The cell membrane splits
- B the nucleus splits again

Benchmark #2 Review

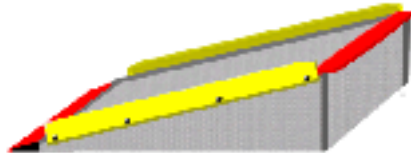
- C the chromosomes divide
- D centrioles appear

23 Why do we know this cell is a eukaryotic cell?



- A It has organelles.
- B It has a nucleus.
- C It has mitochondria.
- D It is round.

24 What type of simple machine is being represented here?



- A a Lever
- B a wedge
- C an incline plane
- D a screw

25 Which of the following is NOT a part of the cell theory?

- A All living things are made of at least one cell.
- B All cells come from existing cells
- C All cells have DNA.
- D Cells are the basic units of life.

Answer Key: Benchmark #2 Review

Question	Key
1	B
2	B
3	B
4	A
5	
6	A
7	A
8	C
9	A
10	A
11	B
12	B
13	A
14	C
15	A
16	D
17	D
18	D
19	D
20	A
21	B
22	A
23	B
24	C
25	C